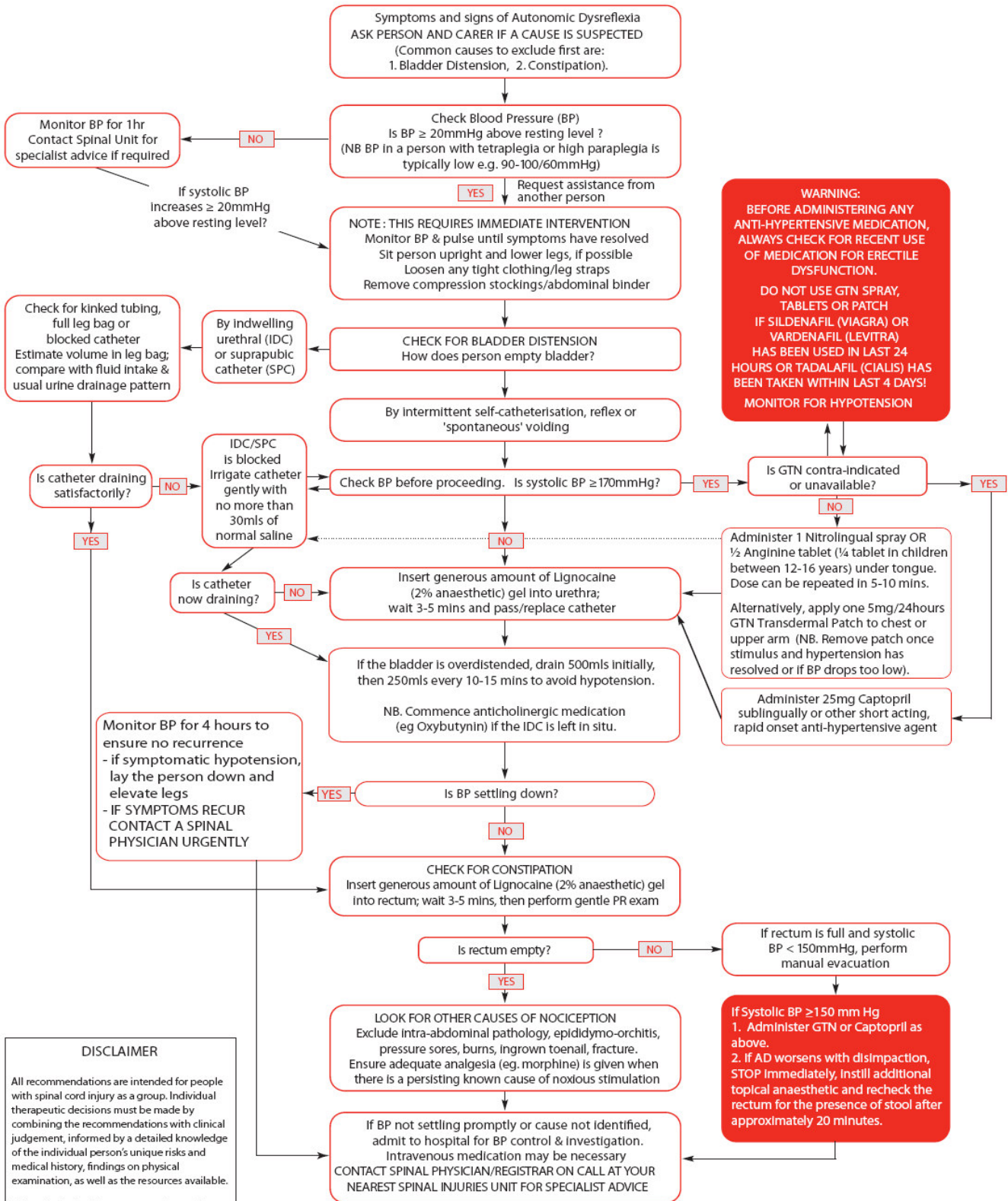


Treatment Algorithm for Autonomic Dysreflexia (Hypertensive Crisis) In Spinal Cord Injury



WARNING:
BEFORE ADMINISTERING ANY
ANTI-HYPERTENSIVE MEDICATION,
ALWAYS CHECK FOR RECENT USE
OF MEDICATION FOR ERECTILE
DYSFUNCTION.

DO NOT USE GTN SPRAY,
TABLETS OR PATCH
IF SILDENAFIL (VIAGRA) OR
VARDENAFIL (LEVITRA)
HAS BEEN USED IN LAST 24
HOURS OR TADALAFIL (CIALIS)
HAS BEEN TAKEN WITHIN LAST 4 DAYS!
MONITOR FOR HYPOTENSION

DISCLAIMER

All recommendations are intended for people with spinal cord injury as a group. Individual therapeutic decisions must be made by combining the recommendations with clinical judgement, informed by a detailed knowledge of the individual person's unique risks and medical history, findings on physical examination, as well as the resources available.

This revised algorithm was re-endorsed for use by the Australian and New Zealand Spinal Cord Society (ANZSCOS) in September 2010.

This project was funded by the Motor Accidents Authority of NSW.